



GROUP OVERVIEW

RESPECT, CARE
AND DELIVER



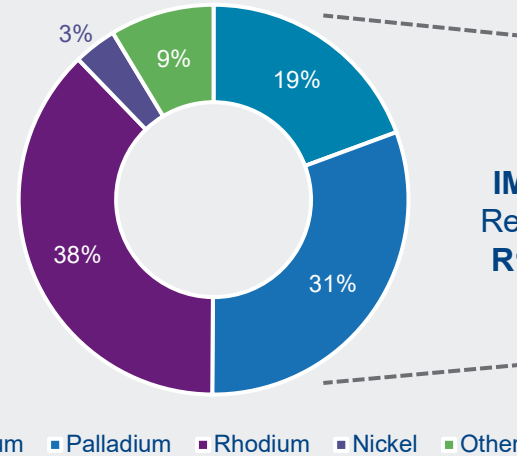
IMPLATS AT A GLANCE

Implats, headquartered out of Johannesburg, South Africa, is a leading producer of PGMs, structured around **six mining operations** and **Impala Refining Services**, a toll refining business

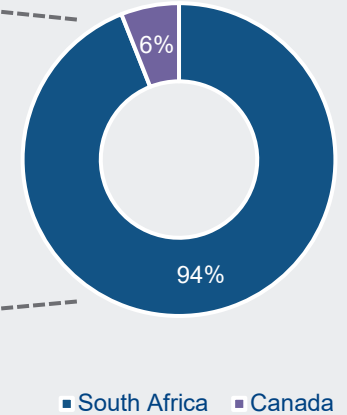
- Has a well positioned, global mining portfolio with operations spanning the **Bushveld Complex in South Africa, the Great Dyke in Zimbabwe** and the **Canadian Shield**
- Is a vertically integrated mine-to-market producer enabling it to capture the benefits across the value chain
- Employs **57 000+** people across all operations and markets and sells products in **South Africa, Japan, China, India, the US and Europe**
- Market Capitalisation of **143.88bn (US\$ 8.02bn)** as at 30 September, with a strong institutional and global investor base (**52%** offshore base¹)

Portfolio as at FY June 2022

Revenue Split by Metals



Revenue Split by Country



IMPLATS Revenue of R118.3bn

GEOGRAPHIC SPLIT OF RESERVES

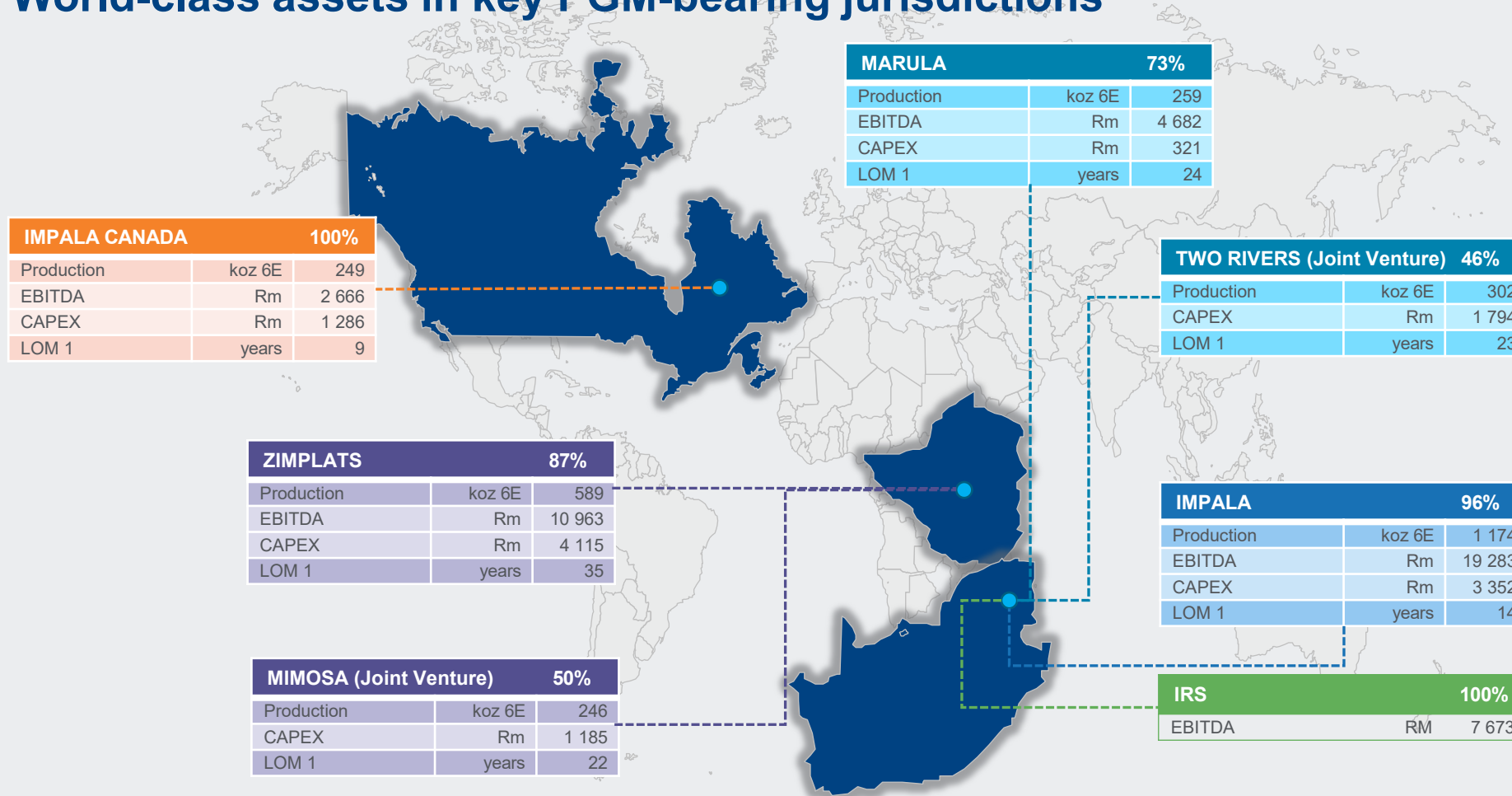
	Pt	Pd	Rh	OPGM
South Africa	52%	40%	66%	56%
Zimbabwe	47%	48%	34%	41%
Canada	1%	12%	0%	3%

268.6 Moz 6E
Attributable resources

61%
of reserves mechanised

IMPLATS AT A GLANCE

World-class assets in key PGM-bearing jurisdictions



Large, global producer with high-quality mine-to-market exposure

3.17 Moz 6E

from operations and scalable processing assets in SA, Zimbabwe and Canada (#2 Pt, #3 Pd, #2 Rh)

Global presence in key PGM- producing regions (ex-Russia) - unparalleled access to low cost, mechanized growth opportunities

Industry-leading **beneficiation facilities** for future sector growth

LEADING PRACTICE IN SUSTAINABLE MINING - ACCOLADES



Included in Sustainability Yearbook 2022
Metals and Mining Industry Mover Award



Improved from BBB to A



Supporter of TCFD

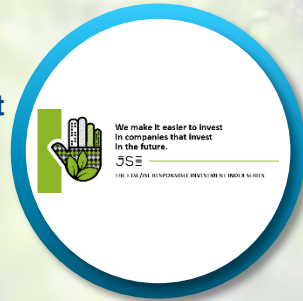


ESG Rating of 4.2 (94th percentile)

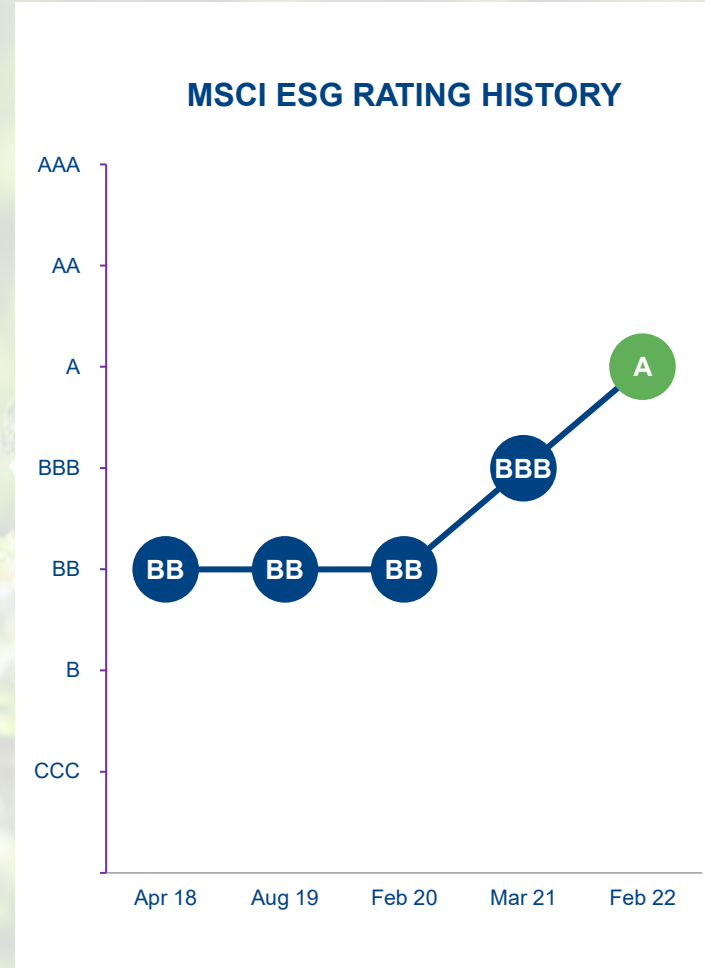


'A' rating for disclosures, awareness and water security risk management

'B' rating for climate change action and disclosures



FTSE/JSE Responsible Investment Index



Recognised as a responsible source of Pt and Pd



Third consecutive inclusion



Best safety performance in the PGM sector

Industry-leading Covid-19 response by a large company



OUR ESG FRAMEWORK

ENVIRONMENT

- Climate change
- Energy
- Water
- Air quality
- Waste management
- Biodiversity
- Rehabilitation and closure



LIMITING OUR IMPACT

SOCIAL

- Health and Safety
- Stakeholder engagement
- Customer custodianship
- Employees
- Mine community
- Human rights



SUSTAINING CONSTRUCTIVE RELATIONSHIPS

GOVERNANCE

- Corporate governance
- Codes of conduct
- Materiality
- Supply chain management
- Risk and crisis management
- Compliance
- Reporting and voluntary disclosures



ETHICAL, TRANSPARENT AND ACCOUNTABLE

Creating a
BETTER FUTURE



Embedding **sustainability** into the way we do business

Standards

Policies

Integrated thinking

Innovation

Technology

ENVIRONMENTAL COMMITMENTS

CO₂ NEUTRALITY



30% reduction by **2030**

Carbon neutrality by **2050**

No **Level 5** or significant **Level 4** environmental incident at any of our operations

RENEWABLE ENERGY



Initiated **2** renewable energy projects at the Group

35MW solar project at Zimplats

33MW solar project at Marula

Study at Impala under way to add 300 MW (Rustenburg 290MW & 16MW at refineries) by 2030

WATER SECURITY



70% reuse/recycle target by **2030**

53% of water reused/recycled against a target of **48%**

ENVIRONMENTAL IMPACT



Construction of Zimplats smelter and **SO₂** abatement plant

Recycled **62%** of non-mineral waste generated against a group target of **60%**.



SOCIAL PROJECTS HIGHLIGHTS

HEALTH AND WELLBEING



Improved health care services benefitted more than **32 800** people



Food security programmes supporting more than **400** households

EDUCATION



Programmes benefitted **47** schools and **>21 000** learners

630 community bursaries and learnerships in scarce skills categories in FY2022

Completed **8** projects to improve learning environments, and equipped **3** laboratories

INCLUSIVE PROCUREMENT



Trained and supported **>450** SMMEs sustaining **3 700** employment opportunities

Spent **>R3.2 bn** on mine community businesses

INFRASTRUCTURE & HOUSING



Completed **24** community infrastructure projects benefitting **>60 000** people

Built **674** houses and created **231** new home owners in FY2022

Supported **>5 300** job opportunities

Benefited **>100 000** people

Invested **R779 million***